

[View this email in your browser](#)



PRO-CLIMATE

Proactive community adaptation to climate change
through social transformation and behavioural change



Empowering Communities for a Resilient Future

The PRO-CLIMATE project is driving **climate adaptation** by fostering **social transformation** and **behavioral change**. Through six Living Labs across Europe, it is generating valuable insights into community-led resilience.



Launched in January 2024, PRO-CLIMATE is funded by the European Commission under the HORIZON-CL5-2023-D1-01-09 topic:

"Behavioural change and governance for systemic transformations towards climate resilience."

 **In this newsletter, we're excited to bring you our latest updates and insights!**

- [3rd PRO-CLIMATE project meeting @Badajoz, Spain](#)
- [Description of the socio-ecological system for each Living Lab](#)
- [Baseline assessment of the PRO-CLIMATE Living Labs](#)
- [Conceptual framework for behavioural change understanding](#)
- [Communication protocols for engagement during the change process](#)
- [PRO-CLIMATE synergies](#)
- [Behavioural change workshop](#)

◆ **Want to learn more?** Visit our [website](#) or view our [project video](#).

Visit our website



Third PRO-CLIMATE meeting @ Badajoz

On February 4-5, 2025, the PRO-CLIMATE consortium gathered in Badajoz, Spain, for its 3rd project meeting, hosted by Diputacion de Badajoz. The meeting brought together all PRO-CLIMATE partners to review the project's progress, address emerging challenges, and plan the next steps.

[Learn more](#)

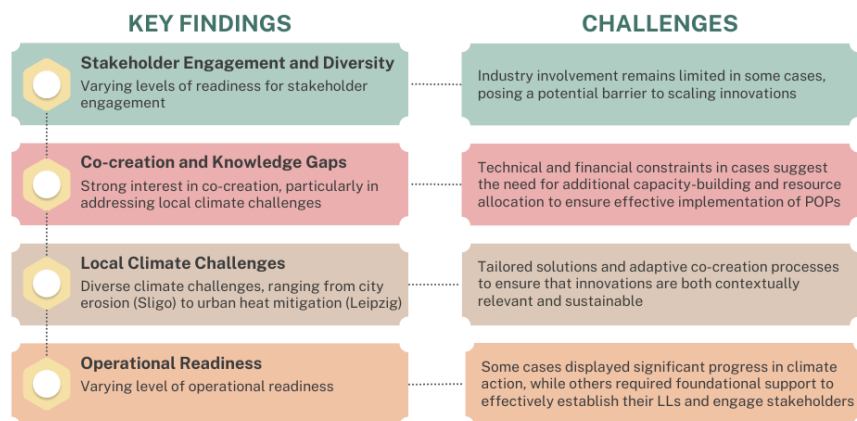
Description of the socio-ecological system for each Living Lab

A report was delivered that provides a comprehensive analysis of the social-ecological systems (SES) in six (6) European Living Labs (LLs): Badajoz (Spain), Bergen (Norway), Gdańsk (Poland), Leipzig (Germany), Sligo (Ireland), and Zakynthos (Greece).

[Learn more](#)



KEY FINDINGS FROM THE CONTEXTUALISATION PROCESS OF THE PRO-CLIMATE LL FRAMEWORK

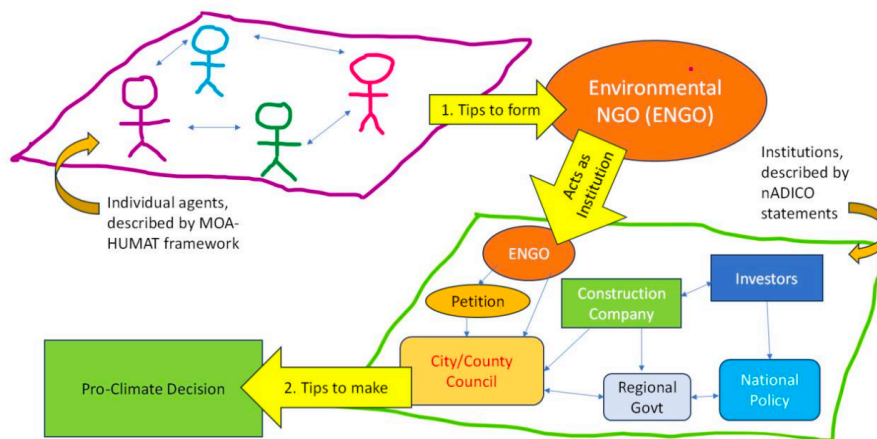


Baseline Assessment and Knowledge Gathering for the PRO-CLIMATE Living Labs

A baseline assessment was conducted to evaluate the starting conditions and implementation readiness of each Living Lab. This assessment highlights the

significant diversity across the six locations, reflecting differences in environmental, social, economic, and institutional contexts.

[Learn more](#)



Conceptual framework for behavioural change understanding

A report was prepared that lays the groundwork for development of the Multi-Agent Computer Model (MACM) designed to analyse how communities respond to climate change challenges, identify tipping points, and promote transformations toward climate resilience. This framework integrates innovative approaches to model complex social-ecological systems (SES), combining methods like the HUMAT and MOA framework and the nADICO institutional grammar.

[Learn more](#)

PRO-CLIMATE synergies established



PRO-CLIMATE and P2R

[Learn more](#)



PRO-CLIMATE and Regions4Climate

[Learn more](#)

Communication protocol for stakeholder engagement

A report was prepared that presents the framework for establishing effective communication protocols that ensure stakeholder engagement throughout the change process. These protocols are designed to drive behavioural change and enhance good governance, which are essential for achieving climate resilience in the identified social-ecological systems (SESs).

[Learn more](#)

Behavioural change workshop

The workshop brought together representatives from “WP4 Good governance and behavioural change” and change agents from all the six PRO-CLIMATE Living Labs.

[Learn more](#)

 **Meet Us at ECCA 2025!** 

We're excited to participate in the **7th European Climate Change Adaptation Conference (ECCA 2025)** in Rimini, Italy, from **June 16-18, 2025!**

Will you be attending too? Let's connect! Reach out to us at **info (at) pro-climate.eu** to arrange a meeting.

Join us in shaping a climate-resilient future! Follow our journey and get involved today.

